

# WebVue



Remote Access  
at Lower Cost

**ARC**  
Informatique

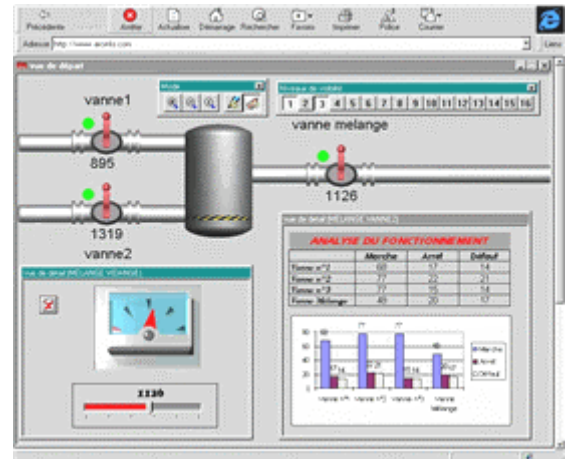
[www.arcinfo.com](http://www.arcinfo.com)

# Remote Access

**WebVue** is an ideal solution for remote maintenance and remote monitoring. Using an ordinary browser, it enables you to display and control your process remotely across an Internet or intranet network without prior installation.

From an ordinary PC running Windows™, Linux or other operating system, **WebVue** supports:

- Display of **PcVue** mimics specifically designed for Web-based use
- Alarm lists and acknowledgement
- Viewing of Historical and Real time trend curves
- Viewing of Historical Event Log lists
- Issuing of commands across your installation.



# Security Management

The **PcVue** Web Server station uses Microsoft® IIS technology to manage security jointly with the enterprise firewall.

Through management of user rights and authentication processes you can access in polling mode the real-time values of **PcVue**'s variables and lists of alarms, historical data, etc.

Those exchanges are based on XML/SOAP via HTTP protocol or HTTPS for encrypted data exchange (SSL V2).

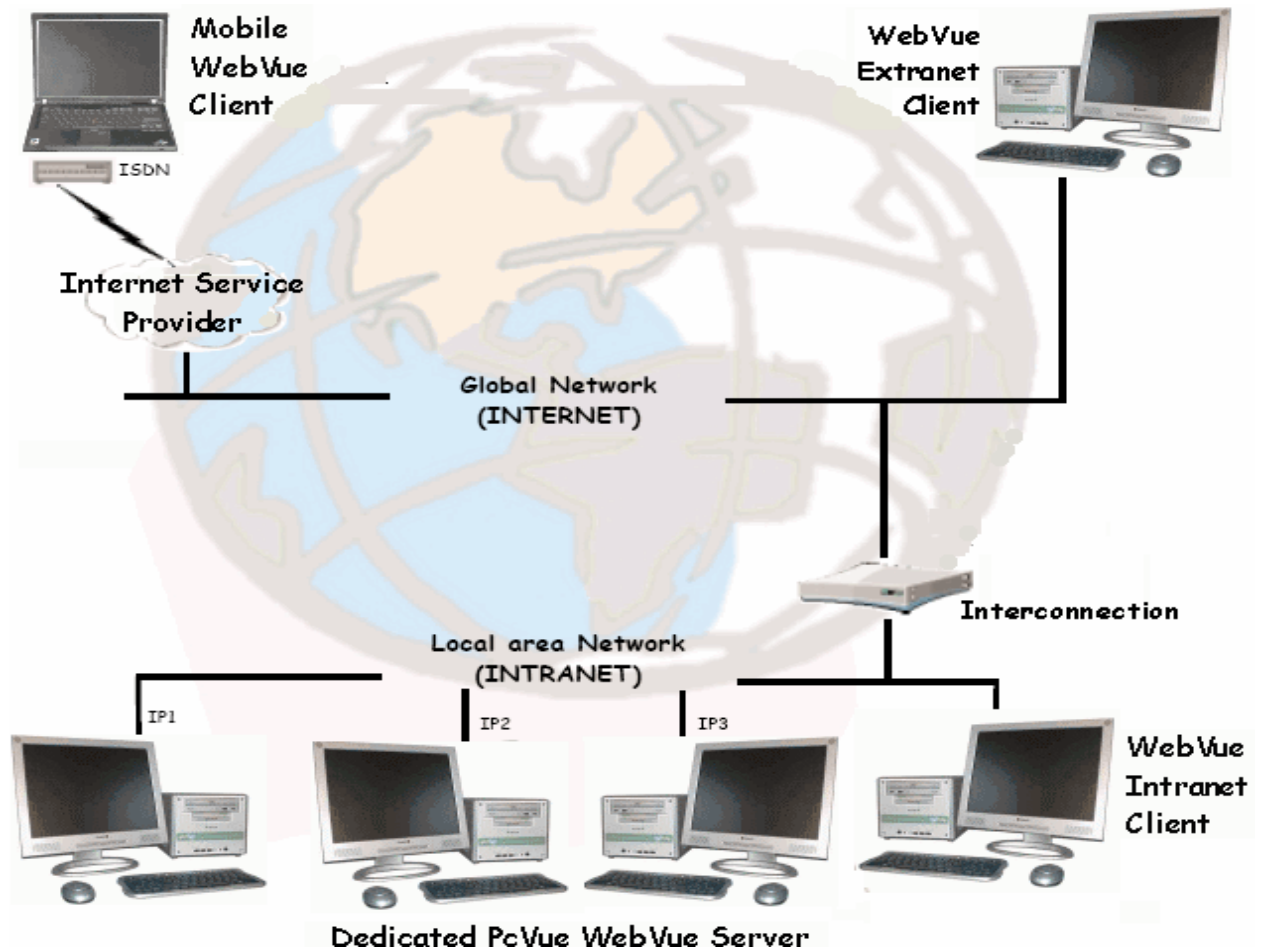
# Java Applet

**WebVue** has two components: an applet that is held on the Web Clients and a Server that provides the mimics and data from a dedicated **PcVue** application.

The **PcVue** Server provides the Web browser on the Web Client station with an HTML start-up page and all of the basic Java classes for the **WebVue** applet.

As soon as it is loaded, the **WebVue** applet:

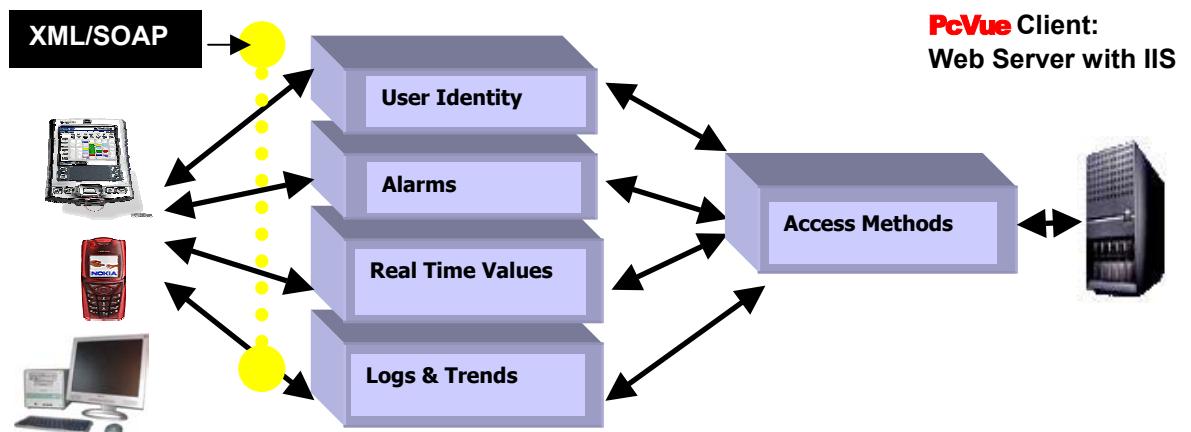
- Connects to the server via a TCP/IP connection.
- Authenticates the user.
- Downloads the required mimic.
- Updates graphic elements of the mimic dynamically from the PcVue Server.
- Supports navigation among the application's mimics.
- Authorizes acknowledgement of alarms, the issuing of remote commands and remote logging within the scope of the users' rights.



## Web Services

When creation of a Web portal to a factory site or a gateway dedicated to a specific application is required, **PcVue** provides, through an IIS server, various public Web services allowing authorized users to make use of the information placed at their disposal.

Using these services, fixed or mobile terminals can access the real-time values of **PcVue's** variables and lists of alarms, historical data, etc.



To support those exchanges, five classes of service can be called from PcVue's Web Services interface. These are based on XML/SOAP via HTTP protocol or HTTPS for encrypted data exchange (SSL V2). The classes handle session management (safety, authentication etc.) and access to real time data, alarms (creation, subscription to lists etc.), event logs (process events, user actions, logins etc.) and historical trends (changes of values etc.). Access to the **PcVue** Server can be achieved as a .Net remote Client in either polling or event-driven mode.

# Offices



**FRANCE** ARC Informatique - Headquarters and Paris office  
2 avenue de la Cristallerie - 92310 Sèvres - France  
tel + 33 1 41 14 36 00 - fax + 33 1 46 23 86 02 - hotline: +33 1 41 14 36 25  
email: [arcnews@arcinfo.com](mailto:arcnews@arcinfo.com) - web: [www.arcinfo.com](http://www.arcinfo.com)

**GERMANY** PcVue GmbH  
Mohnweg 2 A  
84079 Bruckberg  
Deutschland  
tel + 49 8765 938 435  
fax + 49 8765 938 437  
email: [info@pcvue.de](mailto:info@pcvue.de)  
web: [www.pcvue.de](http://www.pcvue.de)

**SWITZERLAND** PcVue GmbH  
Harzachstrasse 2b  
8404 Winterthur  
Switzerland  
tel + 41 52 682 19 38  
fax + 41 52 682 19 58  
email: [info@pcvue.ch](mailto:info@pcvue.ch)  
web: [www.pcvue.ch](http://www.pcvue.ch)

**UK** Control Technology International  
Regal Chambers  
49/51 Bancroft, Hitchin  
Hertfordshire, SG5 1LL England  
tel + 44 1 462 45 77 00  
fax + 44 1 462 45 33 77  
email: [info@ctiweb.co.uk](mailto:info@ctiweb.co.uk)  
web: [www.ctiweb.co.uk](http://www.ctiweb.co.uk)

**USA** PcVue Inc  
10 Tower Office Park,  
Suite # 204  
Woburn, MA 01801 - USA  
tel + 1 781 569 0646  
fax + 1 781 569 6105  
email: [pcvueinc@arcinfo.com](mailto:pcvueinc@arcinfo.com)  
web: [www.pcvueinc.com](http://www.pcvueinc.com)

**SINGAPORE** PcVue Sea  
371 Beach Road  
#02-12 Keypoint  
Singapore 199597  
tel + 65 6396 9186  
fax + 65 6296 0943  
email: [pcvuesea@pacific.net.sg](mailto:pcvuesea@pacific.net.sg)  
web: [www.pcvue-sea.com](http://www.pcvue-sea.com)  
hotline: Tel + 60 3 7957 5187

**CHINA** PcVue China  
Representative Office  
1 WanHangDu Road, Building B,  
Office 702, Jing An District,  
200040, Shanghai, P. R. China  
tel + 86 21 3214 0708  
fax + 86 21 3214 0733  
email: [n.trang@arcinfo.com](mailto:n.trang@arcinfo.com)

FRANCE - Aix Office  
tel + 33 4 42 52 36 83  
fax + 33 4 42 29 74 55  
email: [arcaix@arcinfo.com](mailto:arcaix@arcinfo.com)

FRANCE - Grenoble Office  
tel + 33 4 76 18 29 12  
fax + 33 4 76 41 06 71  
email: [arcgrenoble@arcinfo.com](mailto:arcgrenoble@arcinfo.com)

FRANCE - Lyon Office  
tel + 33 4 78 35 93 93  
fax + 33 4 78 35 35 92  
email: [arclyon@arcinfo.com](mailto:arclyon@arcinfo.com)  
hotline: Tel + 33 4 78 35 93 54

FRANCE - Strasbourg Office  
tel + 33 3 88 21 02 10  
fax + 33 3 88 21 02 11  
email: [arcstrasbourg@arcinfo.com](mailto:arcstrasbourg@arcinfo.com)

**also:** Argentina, Australia, Benelux, Brazil, Canada, Chile, China, Finland, Greece, India, Indonesia, Italy, Kuwait, Latvia, Lithuania, Malaysia, Morocco, Pakistan, Poland, Portugal, Russia, South Africa, Spain, Syria, Taiwan, Thailand, Tunisia, Turkey, UAE, Ukraine, Venezuela etc.